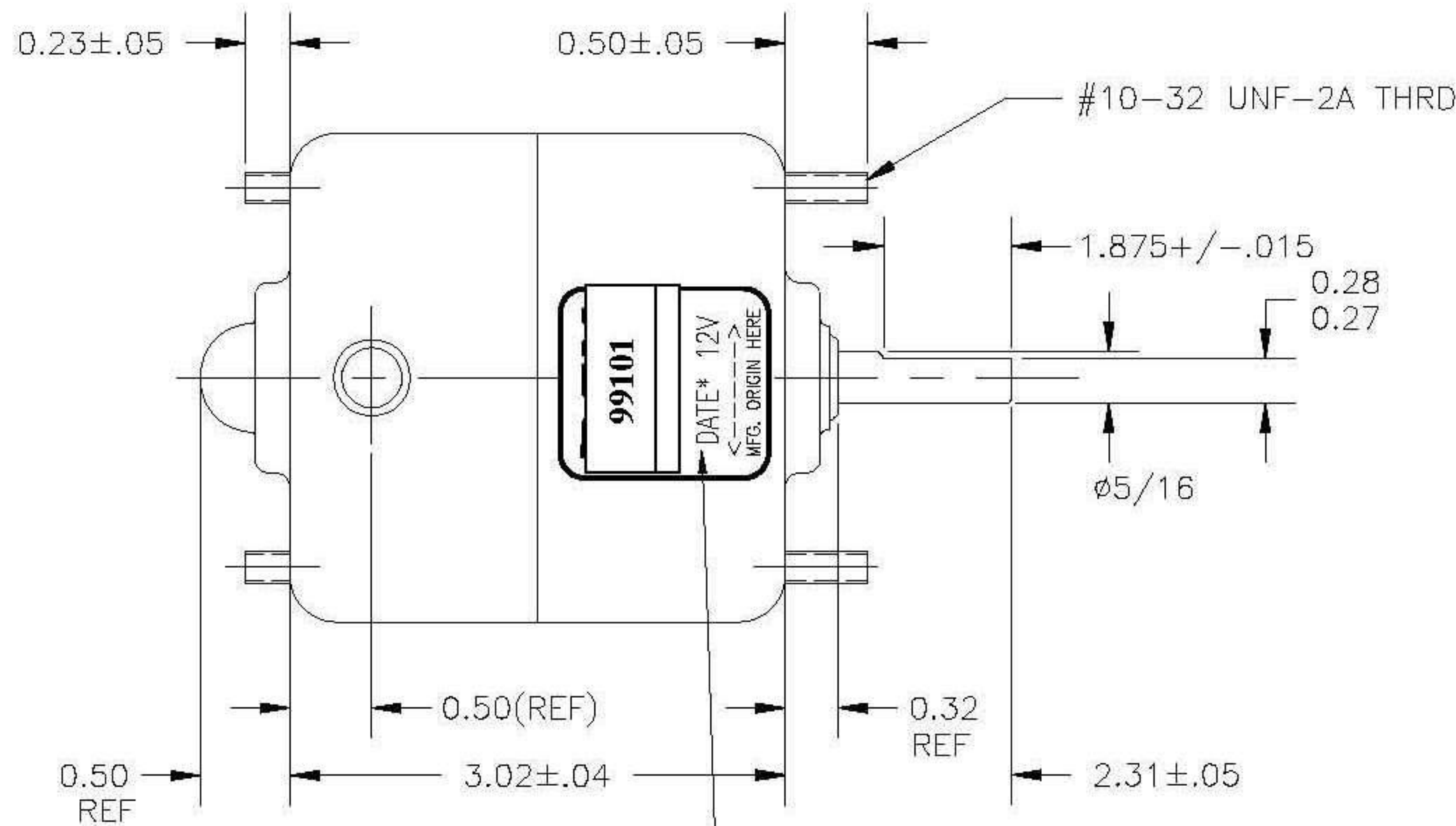


ROTATION

- CLOCKWISE ~ CONNECT YELLOW & BLUE ~ POWER TO RED
- COUNTER CLOCKWISE ~ CONNECT RED & BLUE ~ POWER TO YELLOW

TEST LIMITS @13.5 VDC

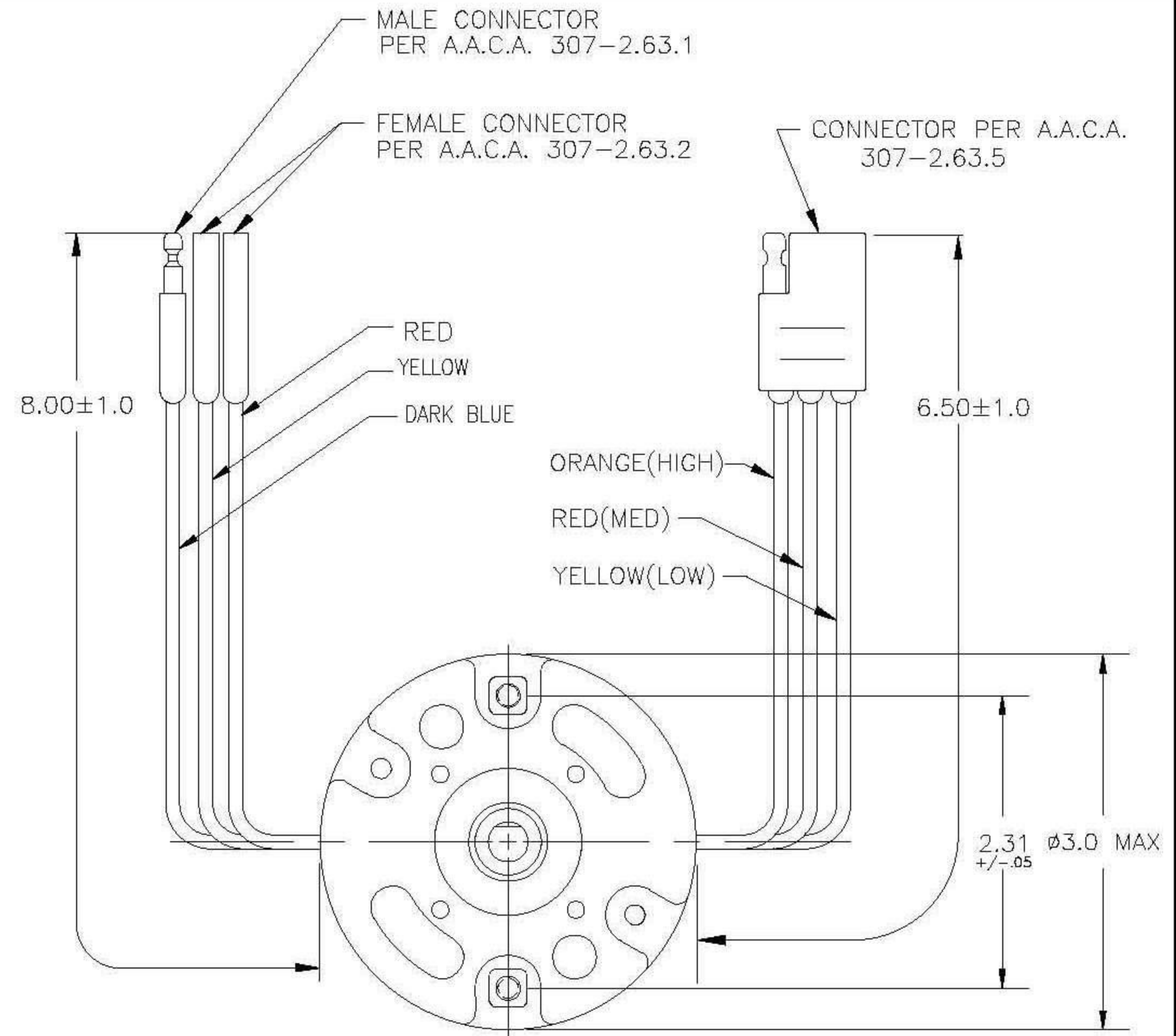
- HIGH SPEED, 40 OZ-IN: 3100RPM MIN, 16.0 AMPS MAX
- MEDIUM SPEED, 20 OZ-IN: 2200 RPM MIN, 9.7 AMPS MAX
- LOW SPEED, 10 OZ-IN: 2465 RPM MIN, 6.1 AMPS MAX



(*) IS SINGLE LETTER REV
SEE REVISION BLOCK

NOTES:

- LEADS ~ #16 GA. SAE TYPE GPT.
- FINISH ~ BLACK EPOXY.
- END PLAY ~ .005/.015.
- MOTOR MUST BE QUIET AND FREE FROM BEARING RATTLE.
- DYNAMIC UNBALANCE ~ .01 IN-OZ MAX.
- MOTOR VENTED BOTH ENDS.
- CONTINUOUS STATOR TEMPERATURE NOT TO EXCEED 225°F.



J	RETOLERANCE PER IMACA	3985	052704
H	ADD REV LEVEL TO LABEL	3923	020403
G	ADDED TEST BENCH LIMITS, DELETE NOTE 8	3835	072701
F	ADDED NOTE #8	3565	052098
E	CNG NAMES	3446	121797
D	CAD REV.	3308	112596
C	WAS .25 ± .047	1206	070886
B	ADD DIM.	1043	020496
A	CNG FLAT	M-0466	020486
NEW	RELEASED	M-0466	041283
REV	DESCRIPTION	ECN	DATE

DO NOT SCALE		INTERPRET IN ACCORDANCE WITH ANSI Y14.5M-1982		ITEM	QTY	P/N	DESC
THIRD ANGLE PROJECTION				MOTOR OUTLINE			
EAST COAST AUTO TOYS 631*563*8885		DIMENSIONS IN INCHES (mm) TOLERANCES UNLESS OTHERWISE SPECIFIED: .X ± XXX .XX ± XXX .XXX ± .005 FRACTIONS ± 1/64 ANGLES ± 0.5°		MATERIAL --N/A--		DRAWN BY DER	
CONFIDENTIAL		PROJ NONE		REF X267		231-1-99101	
				SIZE		REV A	